

## PRICE LIST

All prices are in US funds - Valid until Jan 1, 2021

### Exploration Packages

V9- (full database platform for multiple surveys, unlimited survey size)

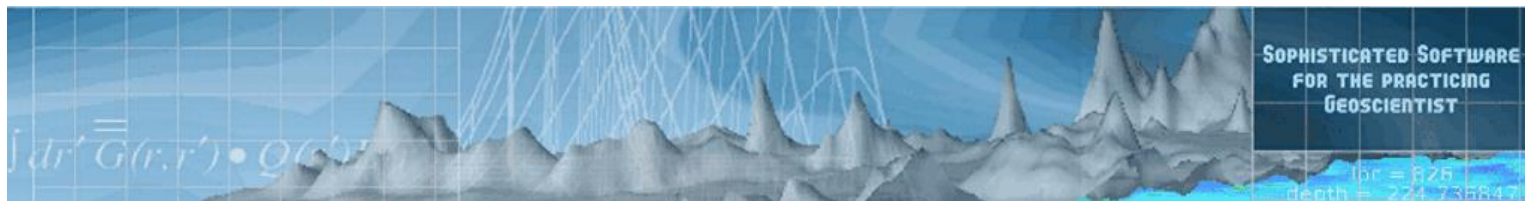
<b>EMIGMA Complete – Airborne, Ground, Borehole</b> <i>For Magnetics, FEM, TEM, Gravity, IP, Resistivity, MMR, VLF</i>	<b>\$8,000</b>
<b>EMIGMA EM for Oil and Gas</b> <i>EM and Magnetics Applications for airborne, ground, marine and borehole surveys Including Natural fields and controlled source electromagnetics plus our magnetics tools Including Land-Based CSEM,MT,ZTEM,AFMAG,MTEM,TEM,FEM,IP,Resistivity,CSAMT</i>	<b>\$10,000</b>
<b>EMIGMA for Magnetics – Airborne, Ground, Borehole</b> <i>Basic, 2D FFT, 3D Inversions, Modelling, Euler solutions</i>	<b>\$3,500</b>
<b>EMIGMA for GRAVITY – Ground, Borehole applications</b> <i>Basic, FFT, 2D/3D modelling, 3D Inversion, Euler, Gravity Corrections</i>	<b>\$4,000</b>
<b>EMIGMA for Marine Gravity and Magnetics</b> <i>For processing, modeling and inversion of general marine potential field system configurations</i>	<b>\$10,000</b>
<b>EMIGMA for VLF/VLF-R</b>	<b>\$1,500</b>
<b>EMIGMA Ground Complete</b> <i>IP/Resistivity, FEM, TEM, Magnetics, Gravity</i>	<b>\$5,000</b>
<b>EMIGMA for MT/AMT - Ground applications</b> <i>Basic, Modelling including 2D/3D models, 1D Inversion, 3D Impedance and Tipper Inversions, stacked 1D Inversion sections and Tensor Decomposition package</i>	<b>\$5,000</b>
<b>EMIGMA for MT/AMT with Ground TEM or Resistivity</b>	<b>\$6,500</b>
<b>EMIGMA for Land-Based CSEM and CSAMT</b> <i>- single or multiple grounded 3D current sources 1D/2D/3D Forward Modelling, 1D and 3D inversion for multiple fields and transmitters suitable for marine CSEM modeling</i>	<b>\$5,000</b>
<b>EMIGMA for IP/Resistivity – Ground</b> <i>Basic PseudoSections, 3D Inversion, 1D Inversion, 2D/3D modelling package</i>	<b>\$2,500</b>
<b>EMIGMA for IP/Resistivity with borehole and crosshole</b>	<b>\$3,500</b>
<b>EMIGMA for MMR</b> <i>Basic 3D modeling.</i> <i>Also available as add-on to EMIGMA Premium for IP/Resistivity</i>	<b>\$2,000</b>

*All above prices are in USD unless stated otherwise, and do not include any taxes, bank transfer charges, delivery costs, custom duties.*

*Training is available on request.*

*Please request a quotation.*

**Represented by:**



Eikon Technologies Ltd.

www.petroseikon.com

## PRICE LIST

All prices are in US \$ - Valid until Jan 1, 2021

<b>EMIGMA for TEM – Ground, Borehole, Airborne</b>	<b>\$6,000</b>
<i>Basic, 3D Modelling, 1D inversion including both inloop and out-of-loop configurations</i>	
<i>Includes airborne and ground applications for FEM and TEM</i>	

<b>Airborne and Ground EM for Natural Fields Add-On</b>	<b>\$3,000</b>
<i>For natural field applications such as MT/AMT, ZTEM and AFMAG</i>	
<i>and capacitive electric field measurements</i>	
<i>Available as add-on to EMIGMA Premium Complete</i>	
<i>This add-on is included in the EM for Oil and Gas license</i>	

<b>EMIGMA for FEM</b>	<b>\$3,000</b>
<i>Basic, with Pseudo-Depth imaging, 1D inversion, 3D modeling.</i>	
<i>Includes airborne and ground applications for FEM</i>	

### Academic Packages

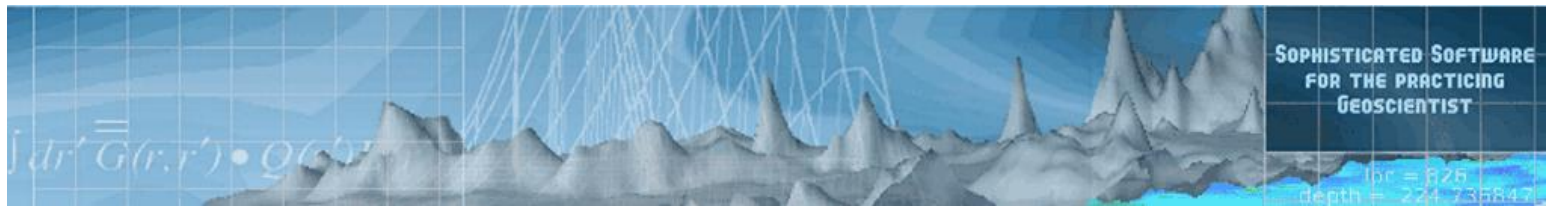
Please contact us for academic prices

*All above prices are in USD unless stated otherwise, and do not include any taxes, bank transfer charges, delivery costs, custom duties.*

*Training is available on request.*

*Please request a quotation.*

**Represented  
by:**



Eikon Technologies Ltd.

www.petroseikon.com

# PRICE LIST

Valid until Jan 1, 2021.

## QCTool V4.0.1

### QCTool V4.0.1 Standard

*Includes 1 year of email support and upgrades*

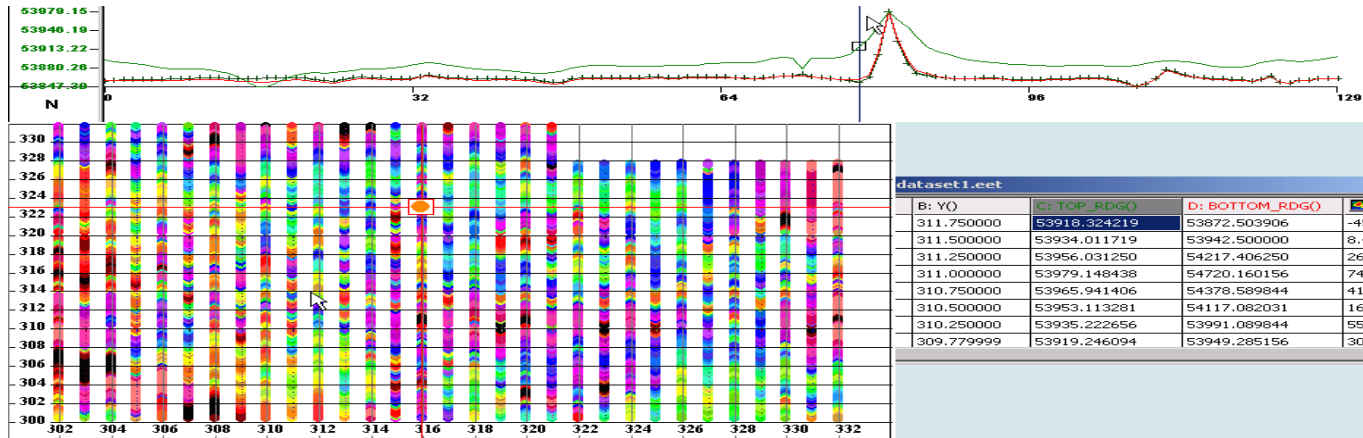
*Data Quality Control, unlimited data points, greater than 500 channels, data linked spreadsheet, plotter, gridding, contouring, filters, GPS projections, IGRF calculations*

*License add-on features*

*Gravity corrections, magnetic corrections, derivative calculations*

*Aeromagnetic Compensation add-on available*

**Basic Price - \$300 USD/license for more details refer to [www.qc-tool.com](http://www.qc-tool.com)**



*All above prices are in USD unless stated otherwise, and do not include any taxes, bank transfer charges, delivery costs, custom duties. Training is available on request. Please request a quotation.*

**Represented by:**