

# EMIGMA 9.5

for Vista / W7 / W8.1/W10

# CSAMT

## Concept

EMIGMA for CSAMT is designed to use the 3D nature of the source

*Not limited to the far-field*

*utilizing the true aspects of the extended current source*

*No limitations to frequency, distance nor azimuth*

**Your entire data set can be used in every geological setting!**

## Data Processing

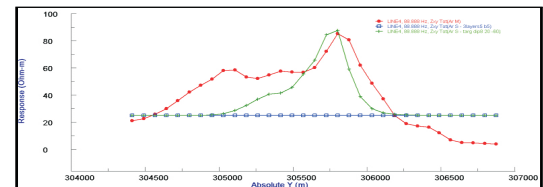
Impedances, electric fields and magnetic fields may be utilized

Imports are allowed in manufacturer formats or simple ASCII XYZ formats

Data corrections of impedances or fields is provided

1D, 2D spatial and digital filters

## Geothermal Study Central America



## Data Display/Analyses/Mapping

Survey and data imaging

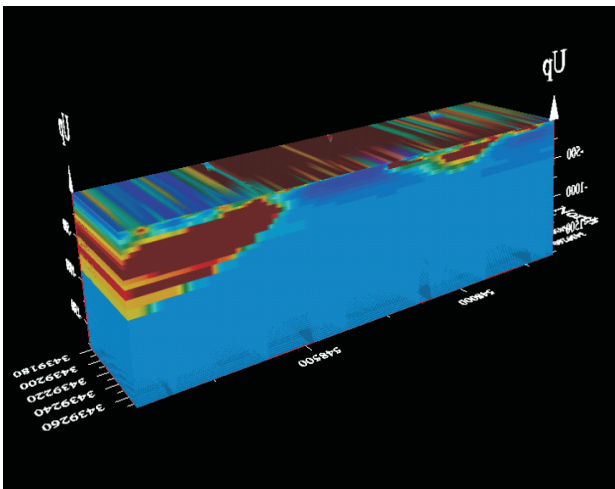
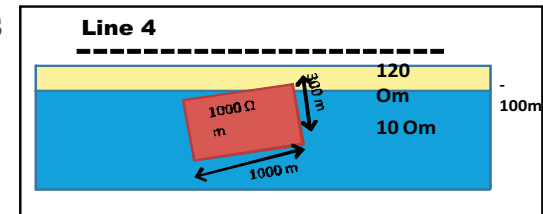
2D multi-component grids allowing simultaneous gridding of multi-frequency and multi-component data

Contouring with map overlays/underlays with transparencies

Import/Export maps for many other applications

Extensive Line Plotting capabilities for impedances or fields

3D Visualization



## 3D Modeling

Fast and accurate 1D and 3D simulations for 3D source

Unlimited prisms and polyhedral targets

3D models with arbitrary strike length

Import and exports to and from CAD software

Simple integration of models with other types of data

## Inversions

3D inversion of impedances or EM fields data

Data from multiple transmitters

3D inversion volume viewing and exporting

Visual grid setups

Three types of grid depth definitions

1D inversions using Occam or underparametrized approaches

## Processing, Imaging & Interpretation Suite

for Mining, Oil & Gas, Near Surface

Exploration, Environmental, Geotechnical, Delineation, UXO

# EMIGMA 9.5

for Vista / W7 / W8.1/W10

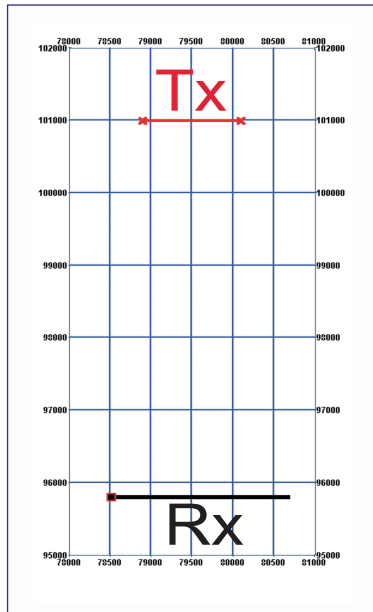
Not limited to the far-field

# CSAMT

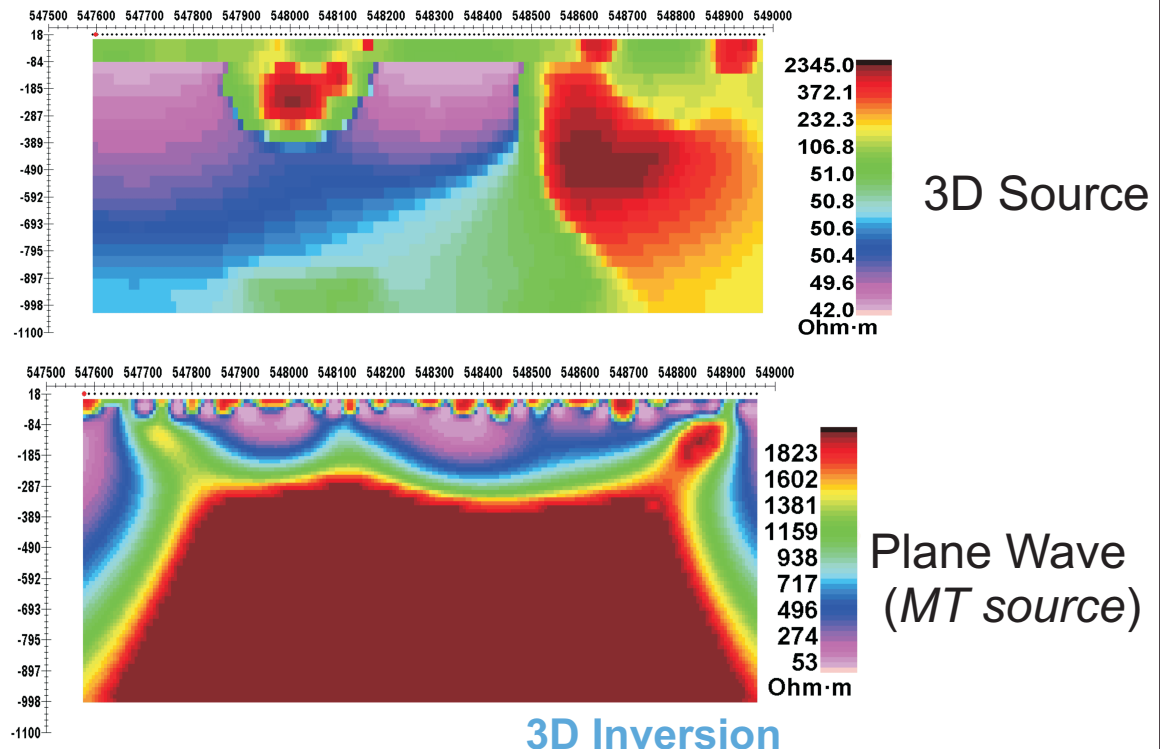
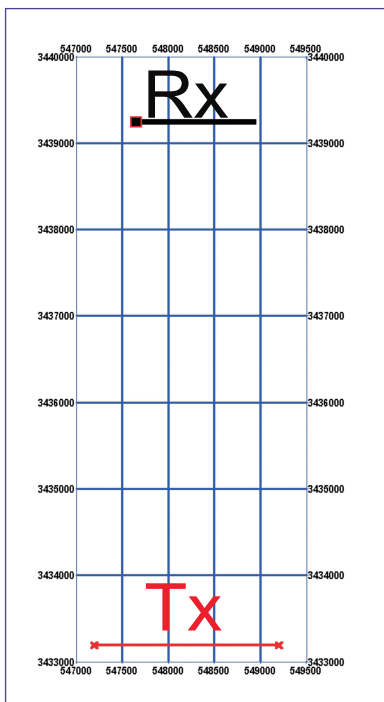
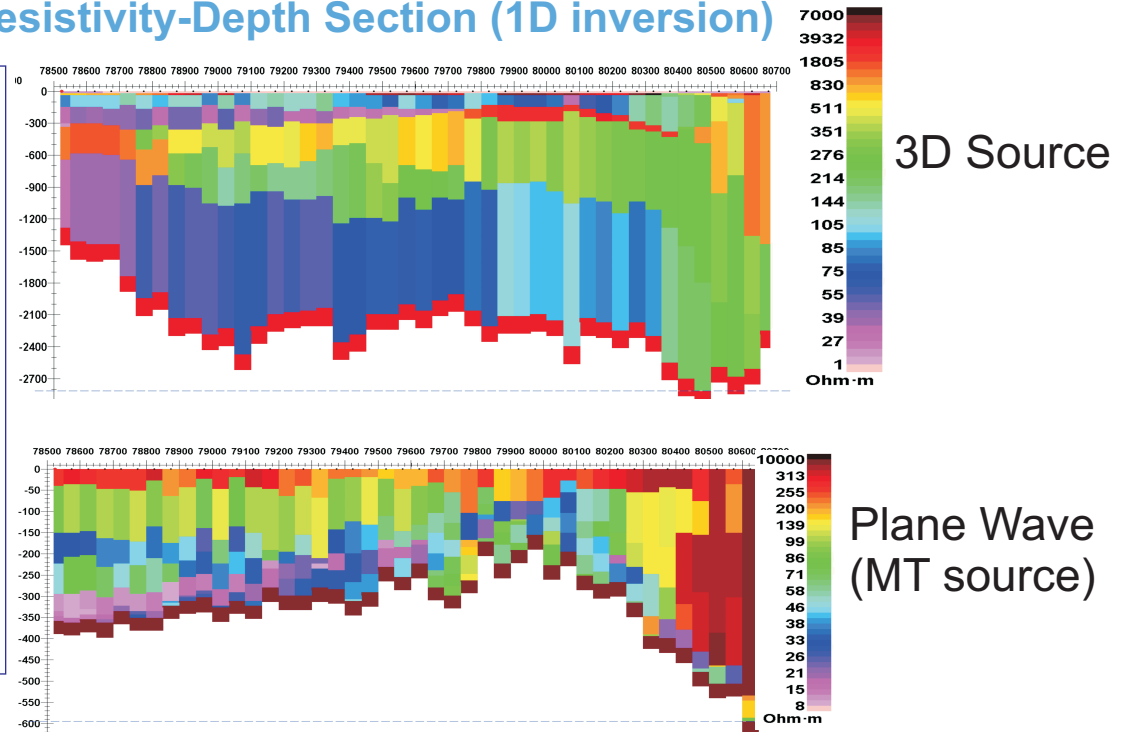
## Concept

EMIGMA for CSAMT is designed to use the 3D nature of the source

### Stacked Resistivity-Depth Section (1D inversion)



Survey Layout



3D Inversion

## Processing, Imaging & Interpretation Suite

Exploration, Environmental, Geotechnical, Delineation, UXO