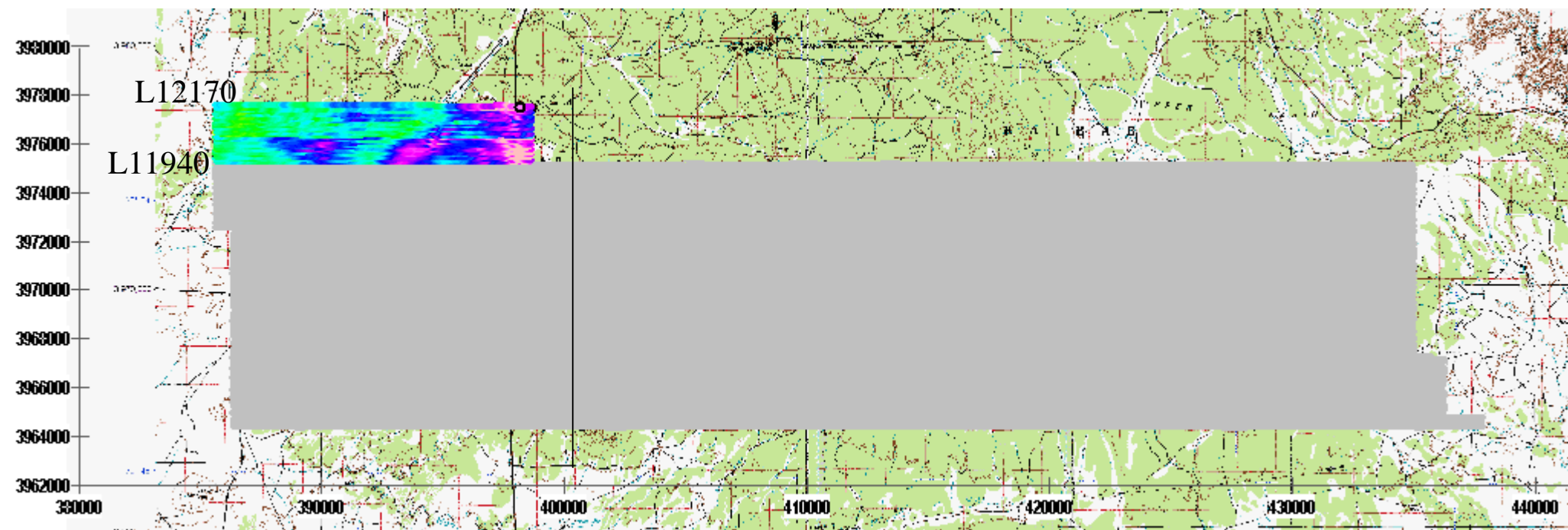


Megatem Inversions South Rim Initial Shallow Inversion Settings April 23, 2007 Shallow Inversions

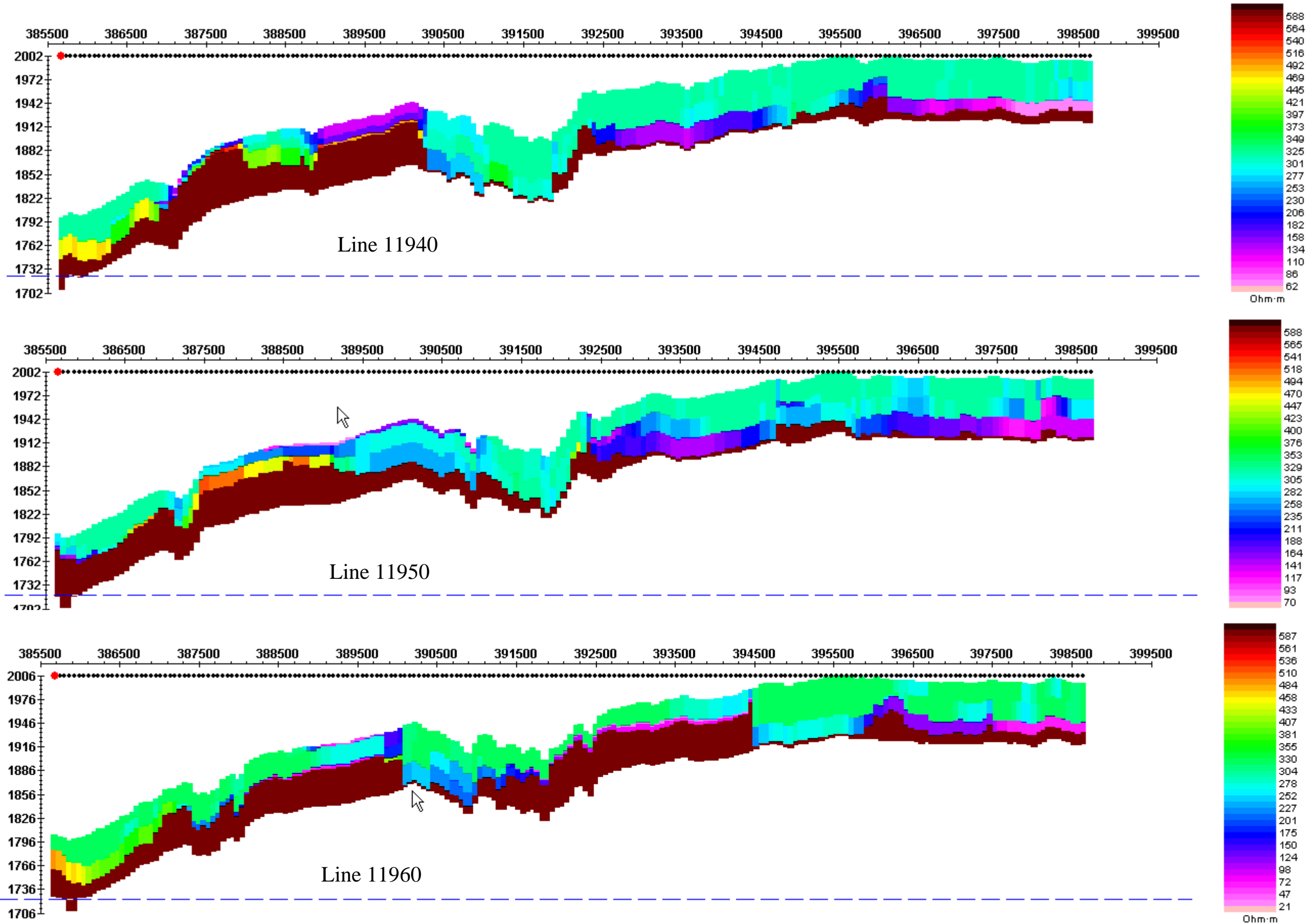
overview

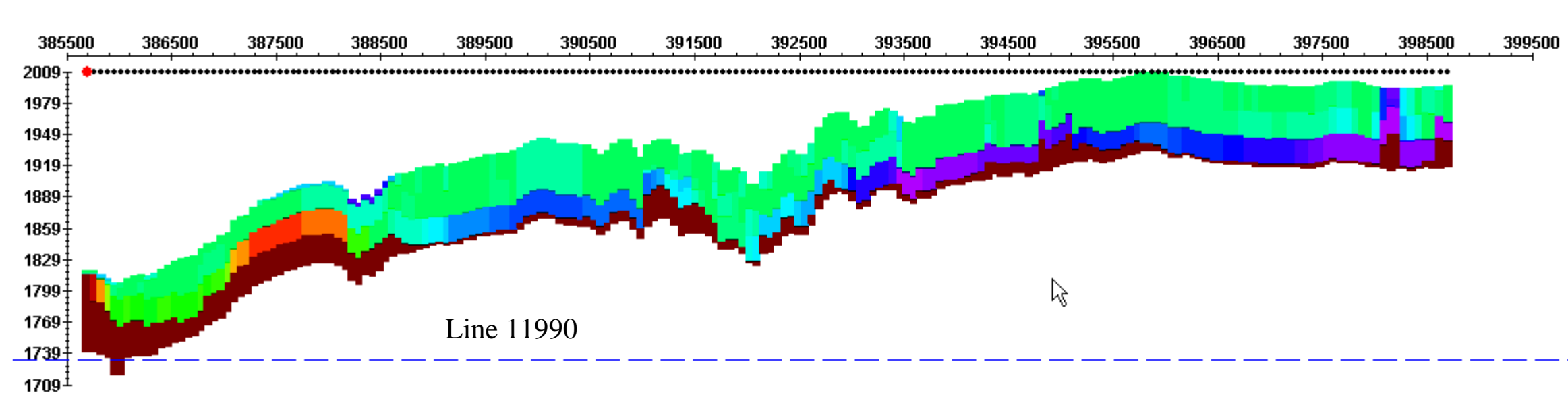
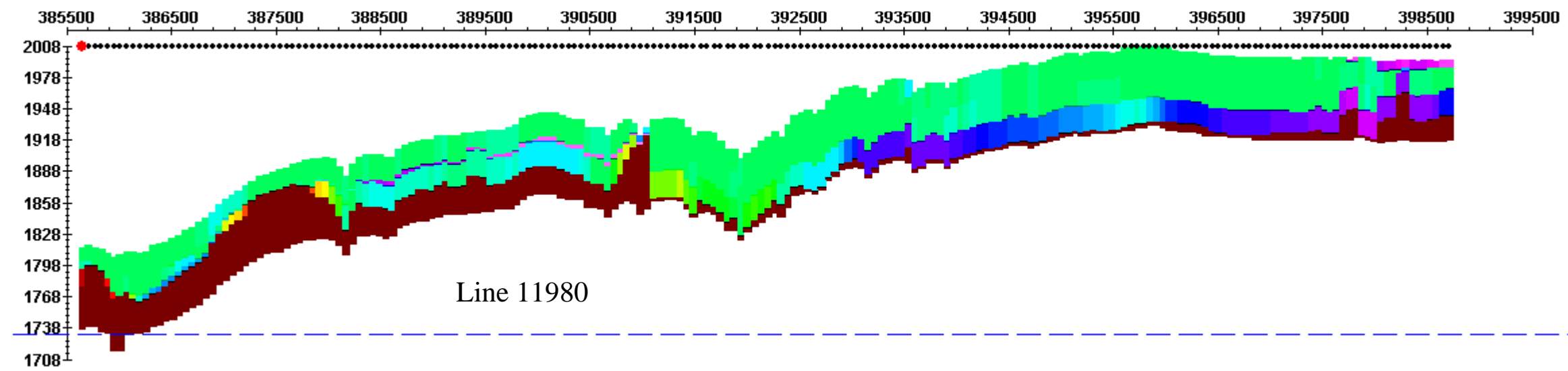
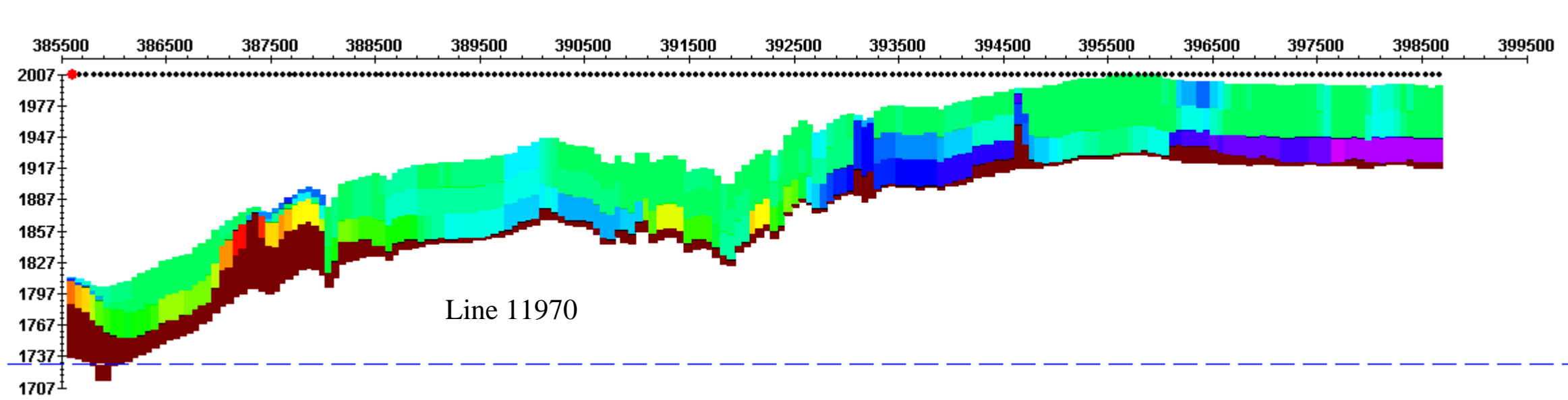
Lines 11940-12170

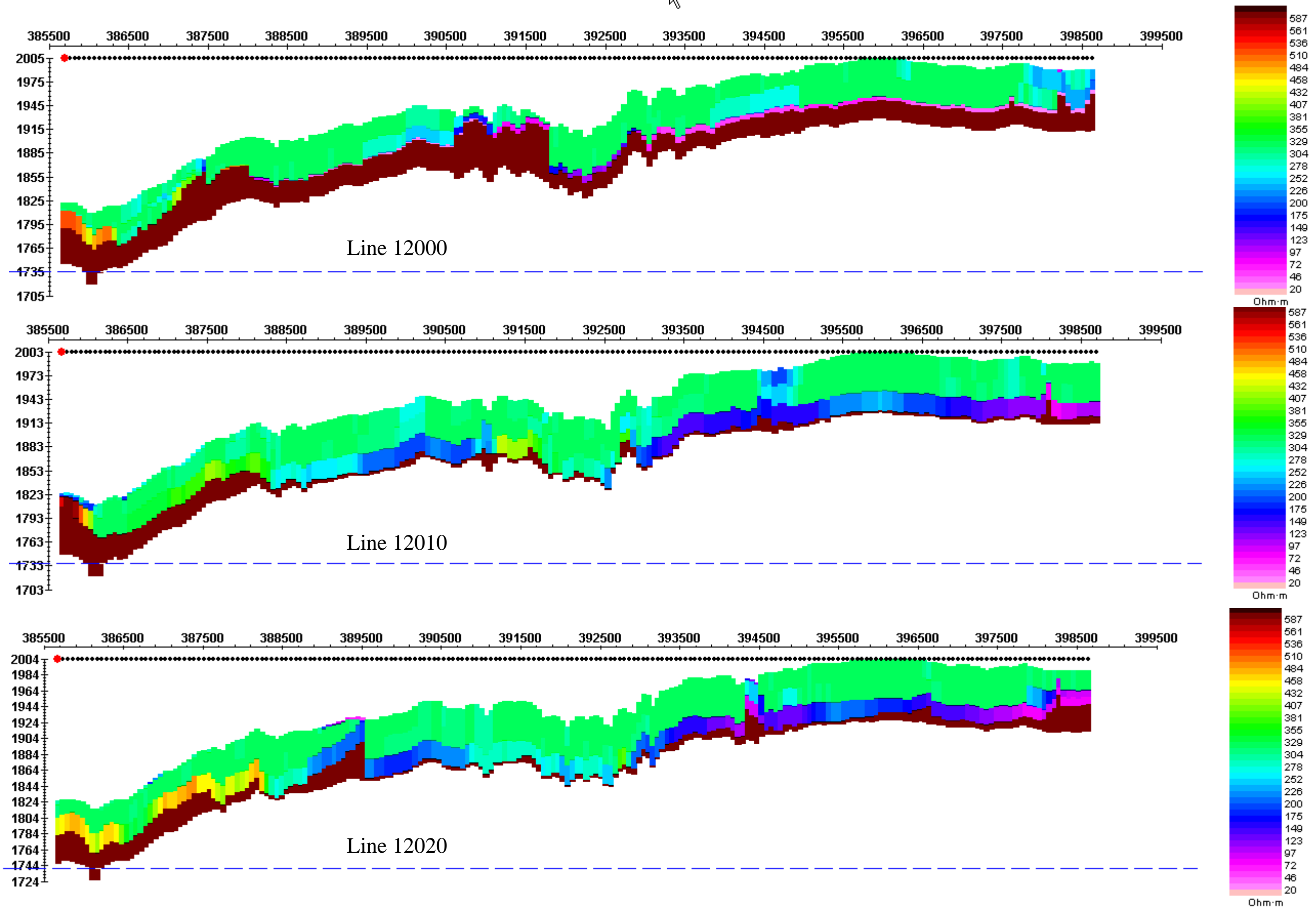


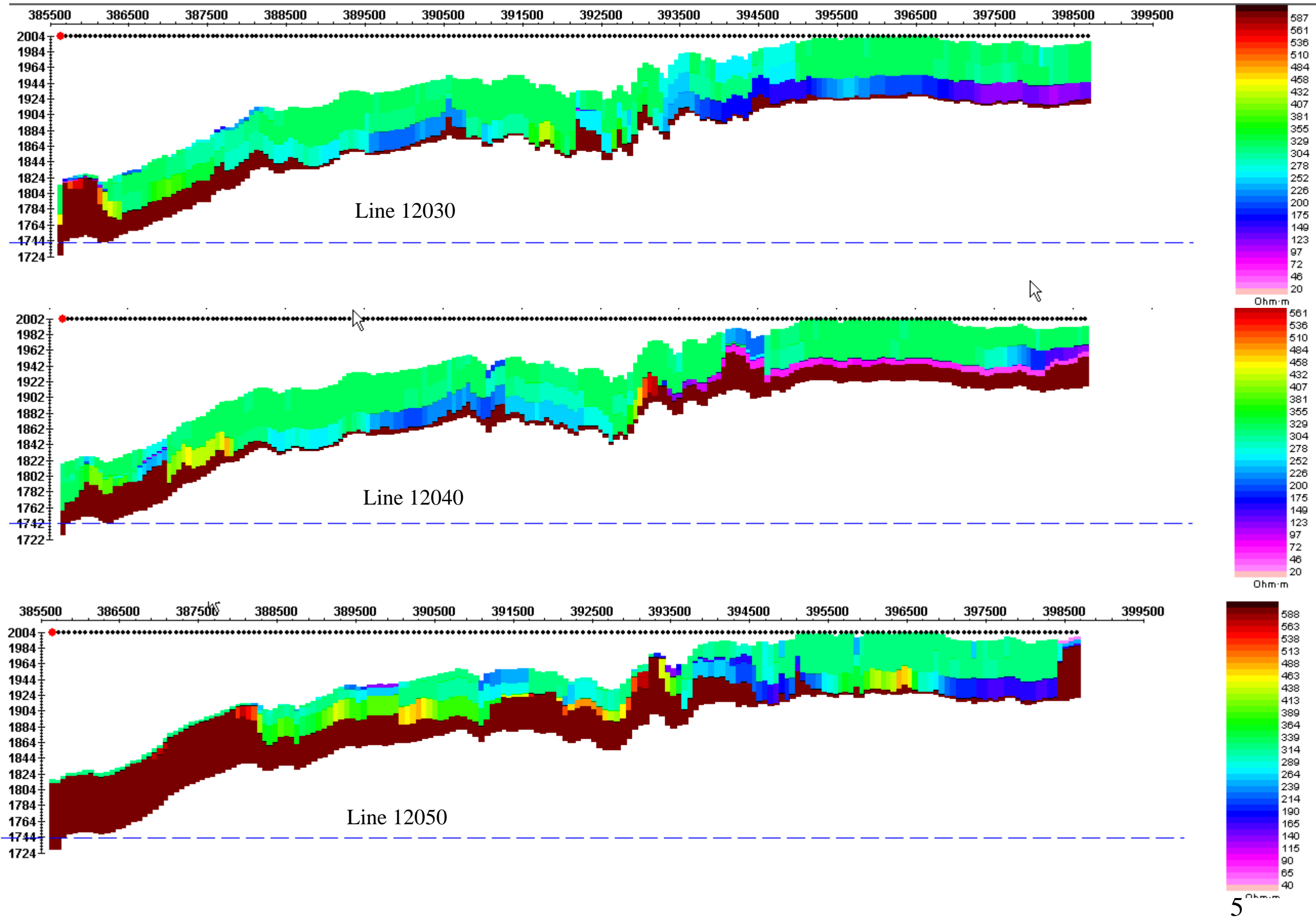
Synopsis:

The data changes dramatically across the NS boundary as indicated. The data to the west has a deeper low resistivity zone than to the east. Therefore, the shallow inversions are more straightforward west of this line. As examples, Lines 11940-12170 are shown. The inversions follow

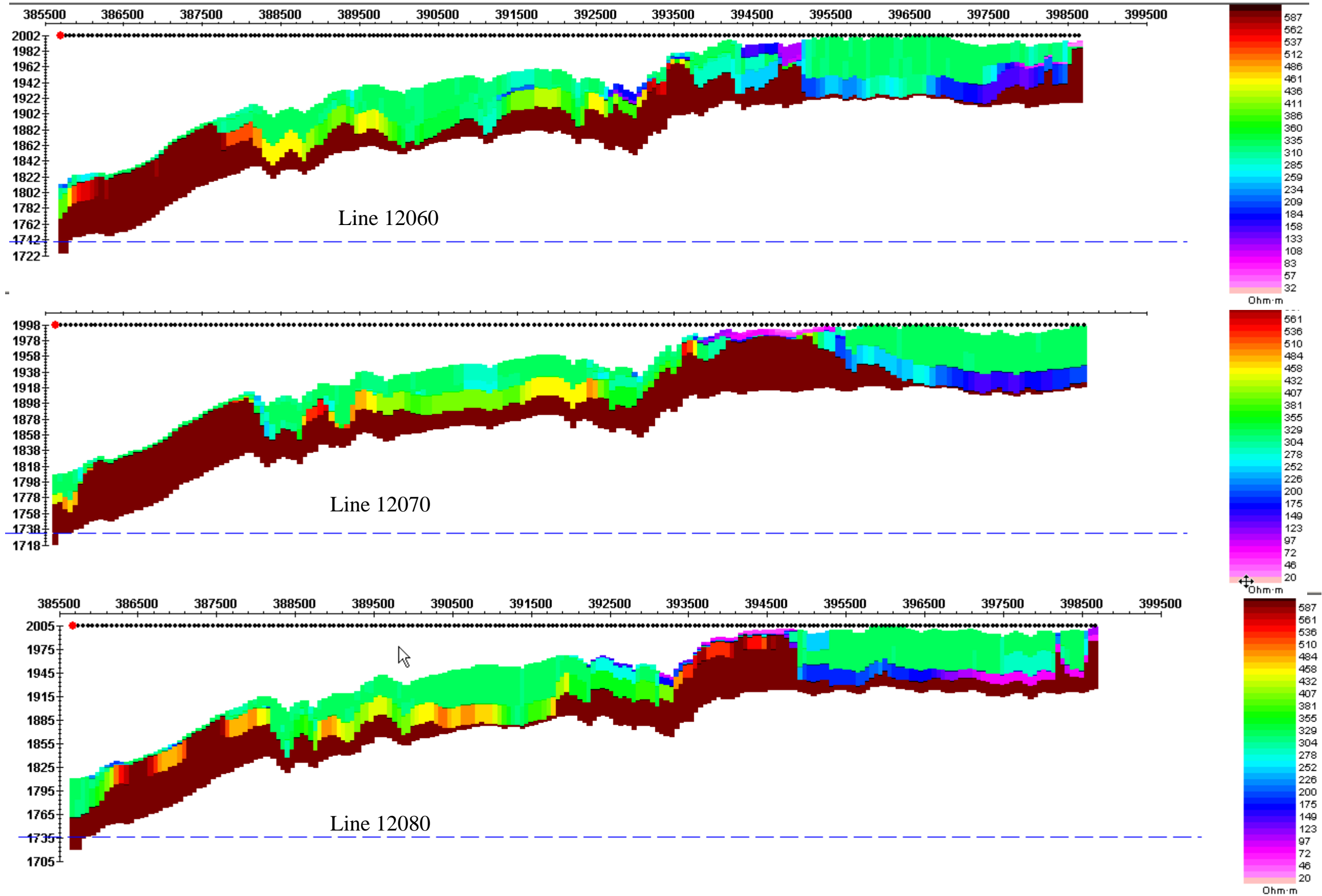


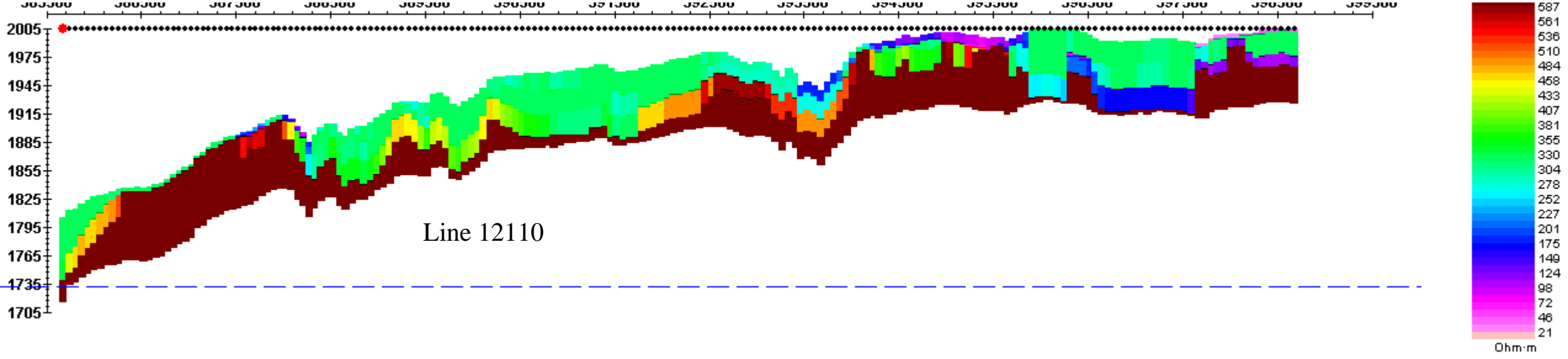
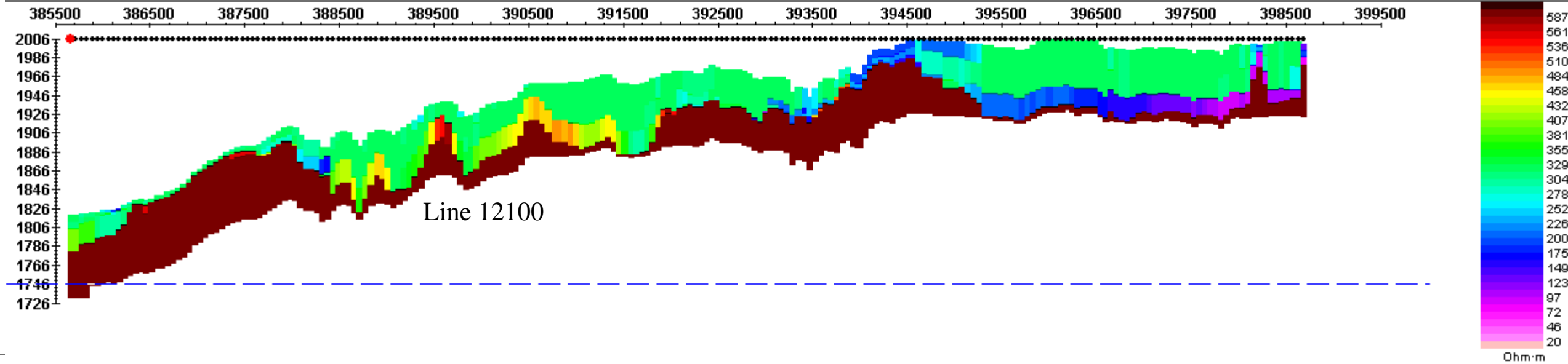
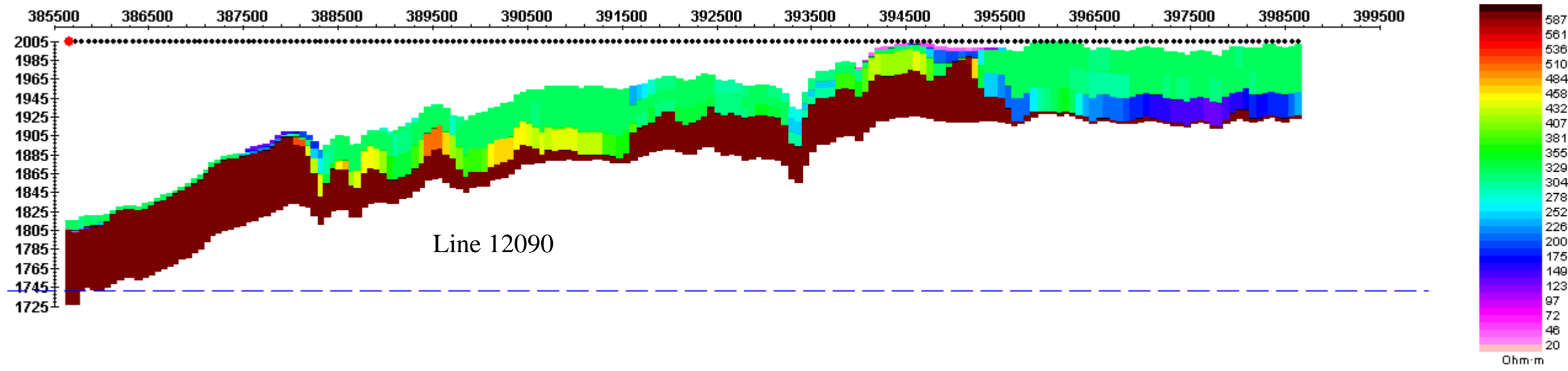


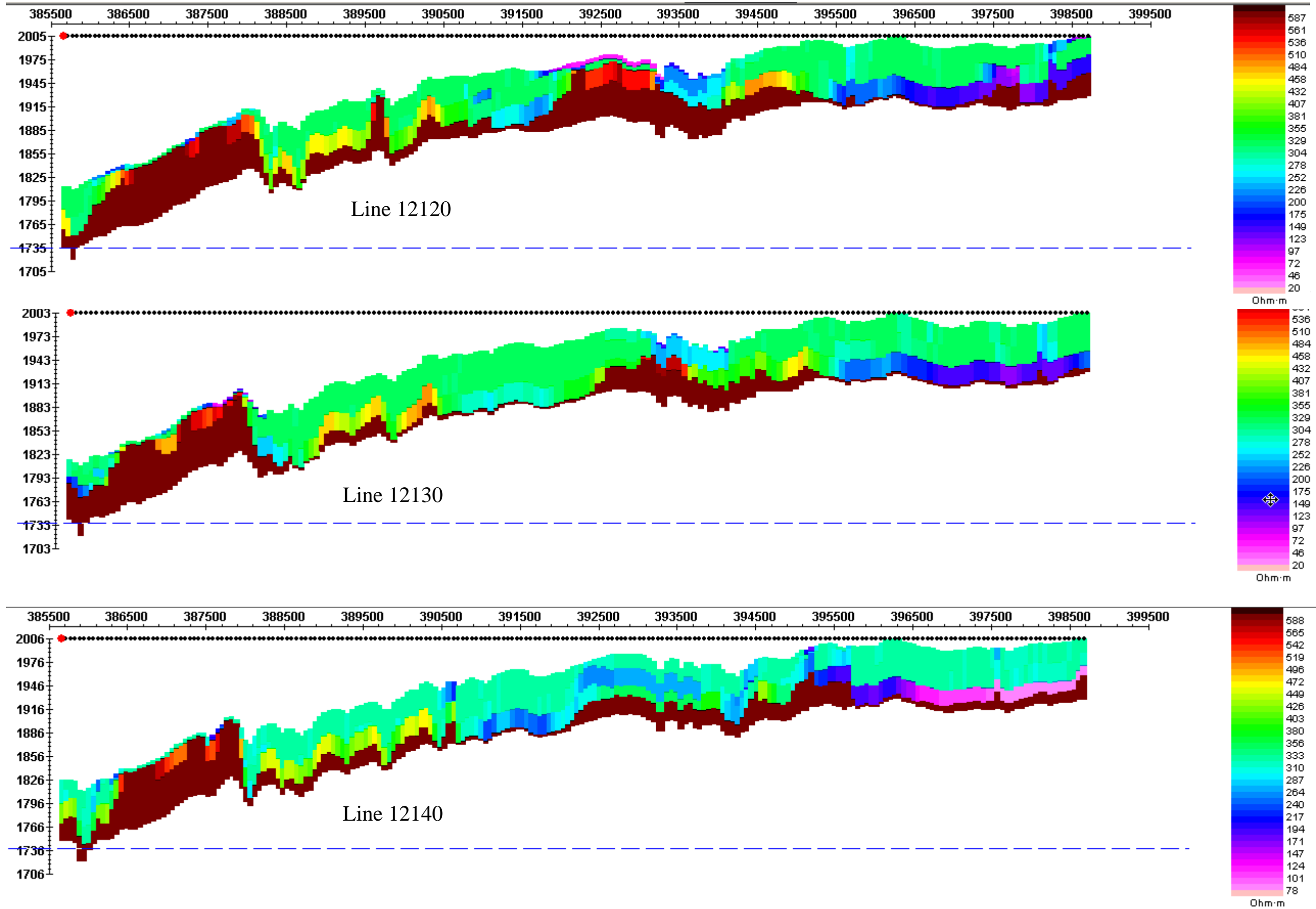


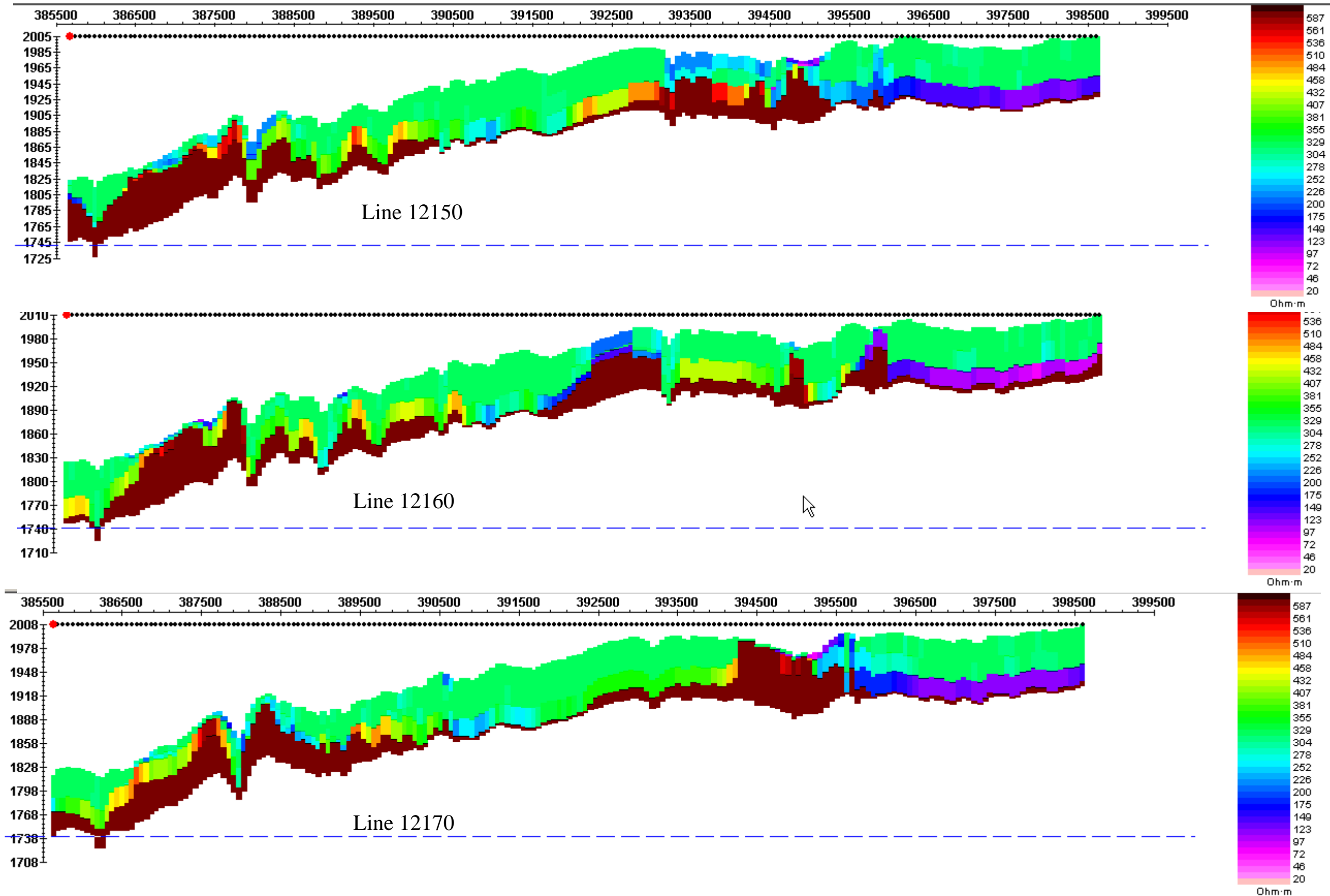


5









Note: Inversions using these settings work quite well west of longitude 112degrees. But, to the east there is less low resistivity coverage over the limestones and the data is such that while shallow inversions can be done, the results are not as reliable as to the west.