

PRICE LIST

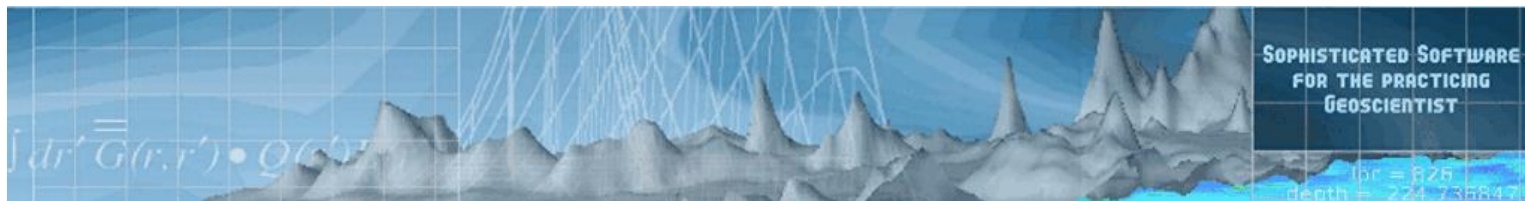
All prices are in US funds - Valid until July 1, 2022

Exploration Packages

V9- (full database platform for multiple surveys, unlimited survey size)

EMIGMA Complete – Airborne, Ground, Borehole <i>For Magnetics, FEM, TEM, Gravity, IP, Resistivity, MMR, VLF</i>	\$9,200
EMIGMA EM for Oil and Gas <i>EM and Magnetics Applications for airborne, ground, marine and borehole surveys Including Natural fields and controlled source electromagnetics plus our magnetics tools Including Land-Based CSEM,MT,ZTEM,AFMAG,MTEM,TEM,FEM,IP,Resistivity,CSAMT</i>	\$11,500
EMIGMA for Magnetics – Airborne, Ground, Borehole <i>Basic, 2D FFT, 3D Inversions, Modelling, Euler solutions</i>	\$4,000
EMIGMA for GRAVITY – Ground, Borehole applications <i>Basic, FFT, 2D/3D modelling, 3D Inversion, Euler, Gravity Corrections</i>	\$4,600
EMIGMA for Marine Gravity and Magnetics <i>For processing, modeling and inversion of general marine potential field system configurations</i>	\$11,500
EMIGMA for VLF/VLF-R	\$1,700
EMIGMA Ground Complete <i>IP/Resistivity, FEM, TEM, Magnetics, Gravity</i>	\$5,800
EMIGMA for MT/AMT - Ground applications <i>Basic, Modelling including 2D/3D models, 1D Inversion, 3D Impedance and Tipper Inversions, stacked 1D Inversion sections and Tensor Decomposition package</i>	\$5,800
EMIGMA for MT/AMT with Ground TEM or Resistivity	\$7,500
EMIGMA for Land-Based CSEM and CSAMT <i>- single or multiple grounded 3D current sources 1D/2D/3D Forward Modelling, 1D and 3D inversion for multiple fields and transmitters suitable for marine CSEM modeling</i>	\$5,800
EMIGMA for IP/Resistivity – Ground <i>Basic PseudoSections, 3D Inversion, 1D Inversion, 2D/3D modelling package</i>	\$2,900
EMIGMA for IP/Resistivity with borehole and crosshole	\$4,000
EMIGMA for MMR <i>Basic 3D modeling.</i> <i>Also available as add-on to EMIGMA Premium for IP/Resistivity</i>	\$2,300

<p><i>All above prices are in USD unless stated otherwise, and do not include any taxes, bank transfer charges, delivery costs, custom duties.</i></p> <p><i>Training is available on request.</i></p> <p><i>Please request a quotation.</i></p>	<p>Represented by:</p>
--	-------------------------------



Eikon Technologies Ltd.

www.petroseikon.com

PRICE LIST

All prices are in US \$ - Valid until July 1, 2022

EMIGMA for TEM – Ground, Borehole, Airborne **\$6,900**

EMIGMA for TEM – Ground **\$3,000**

Basic, 3D Modelling, 1D inversion including both inloop and out-of-loop configurations

Includes applications for FEM and TEM

Airborne and Ground EM for Natural Fields Add-On **\$3,500**

For natural field applications such as MT/AMT, ZTEM and AFMAG and capacitive electric field measurements

Available as add-on to EMIGMA Premium Complete

This add-on is included in the EM for Oil and Gas license

EMIGMA for FEM **\$3,500**

Basic, with Pseudo-Depth imaging, 1D inversion, 3D modeling.

Includes airborne and ground applications for FEM

Academic Packages

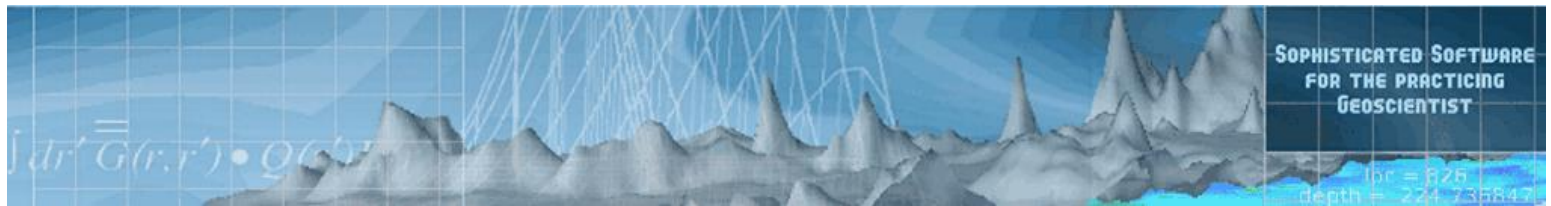
Please contact us for academic prices

All above prices are in USD unless stated otherwise, and do not include any taxes, bank transfer charges, delivery costs, custom duties.

Training is available on request.

Please request a quotation.

**Represented
by:**



Eikon Technologies Ltd.

www.petroseikon.com

PRICE LIST

Valid until July 1, 2022.

QCTool V4.0.6

QCTool V4.0.6 Basic

Includes 1 year of email support and upgrades

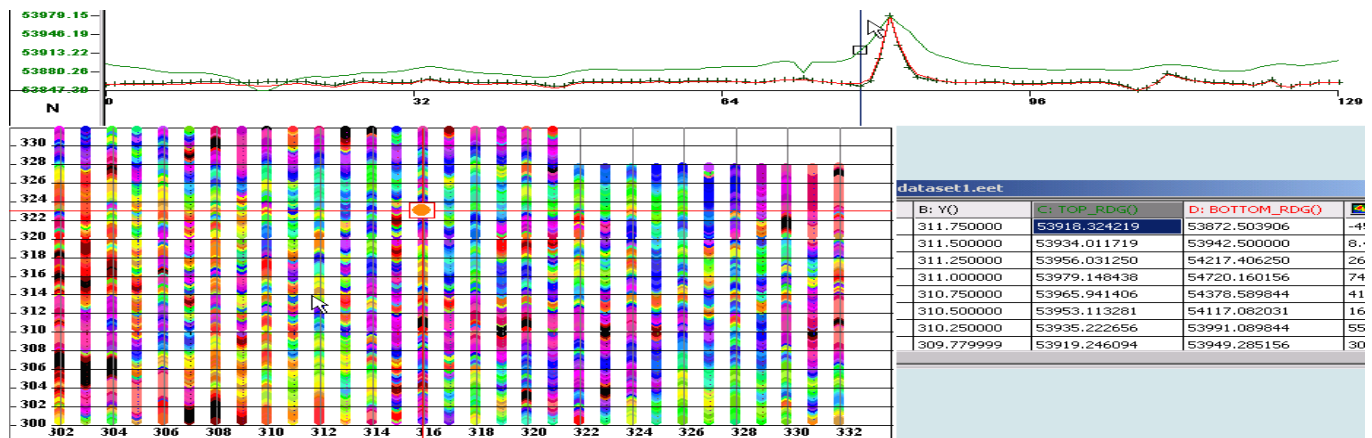
Data Quality Control, unlimited data points, greater than 500 channels, data linked spreadsheet, plotter, gridding, contouring, filters, GPS projections, IGRF calculations

Add-on features

Gravity corrections, magnetic corrections, derivative calculations

Aeromagnetic Compensation add-on available

Basic Price - \$400 USD/license for more details refer to www.qc-tool.com



All above prices are in USD unless stated otherwise, and do not include any taxes, bank transfer charges, delivery costs, custom duties.

Training is available on request.

Please request a quotation.

Represented by: