

PetRos Eikon Incorporated

14 Stewart Court, Ground Floor, Orangeville, Ont., L9W 3Z9 Canada, tel. +1 519 943 0001

www.petroseikon.com

PRICE LIST

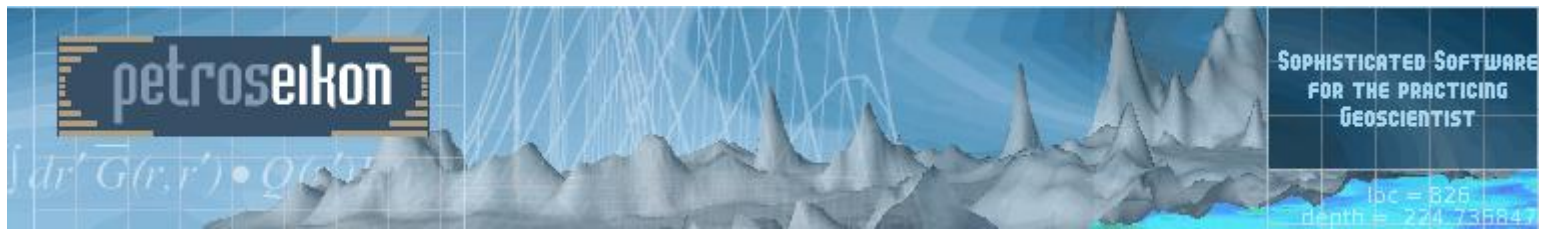
All prices are in US funds - Valid until July 1, 2019

Premium Exploration Packages

V9- Premium Series (full database platform for multiple surveys, unlimited survey size)

EMIGMA Premium Complete – Airborne, Ground, Borehole <i>For Magnetics, FEM, TEM, Gravity, IP, Resistivity, MMR, Marine EM</i>	\$10,000
EMIGMA Premium EM for Oil and Gas <i>EM and Magnetics Applications for airborne, ground, marine and borehole surveys</i> <i>Including Natural fields and controlled source electromagnetics plus our magnetics tools</i> <i>Including Land-Based CSEM, MT, ZTEM, AFMAG, MTEM, TEM, FEM, IP, Resistivity, CSAMT</i>	\$10,000
EMIGMA for Ground and Borehole applications <i>For Magnetics, FEM, TEM, Gravity, IP, Resistivity, MMR</i>	\$6,000
EMIGMA for Magnetics – Airborne, Ground, Borehole <i>Basic, 2D FFT, 3D Inversions, Modelling, Euler solutions</i>	\$3,500
EMIGMA for GRAVITY – Airborne, Ground, Borehole applications <i>Basic, FFT, 2D/3D modelling, 3D Inversion, Euler, Gravity Corrections</i>	\$4,200
EMIGMA for Potential Fields – Airborne, Ground, Borehole <i>Combined gravity and magnetic package</i>	\$6,000
EMIGMA for Marine Gravity and Magnetics <i>For processing, modeling and inversion of general marine potential field system configurations</i>	\$10,000
EMIGMA for MT/AMT - Ground applications <i>Basic, Modelling including 2D/3D models, 1D Inversion, 3D Impedance and Tipper Inversions, stacked 1D Inversion sections and Tensor Decomposition package with Ground TEM or Resistivity</i>	\$5,000
EMIGMA for Land-Based CSEM and CSAMT <i>- single or multiple grounded 3D current sources</i> <i>1D/2D/3D Forward Modelling, 1D and 3D inversion for multiple fields and transmitters suitable for marine CSEM modeling</i>	\$5,000
EMIGMA for IP/Resistivity - Ground, Borehole, Xhole applications <i>Basic PseudoSections, 3D Inversion, 1D Inversion, 2D/3D modelling package</i>	\$3,500
EMIGMA for MMR Basic 3D modeling. <i>Also available as add-on to EMIGMA Premium for IP/Resistivity</i>	\$2,500

<p><i>All above prices are in USD unless stated otherwise, and do not include any taxes, bank transfer charges, delivery costs, custom duties.</i></p> <p><i>Training is available on request.</i></p> <p><i>Please request a quotation.</i></p>	<p>Represented by:</p>
--	-------------------------------



PetRos Eikon Incorporated

www.petroseikon.com

PRICE LIST

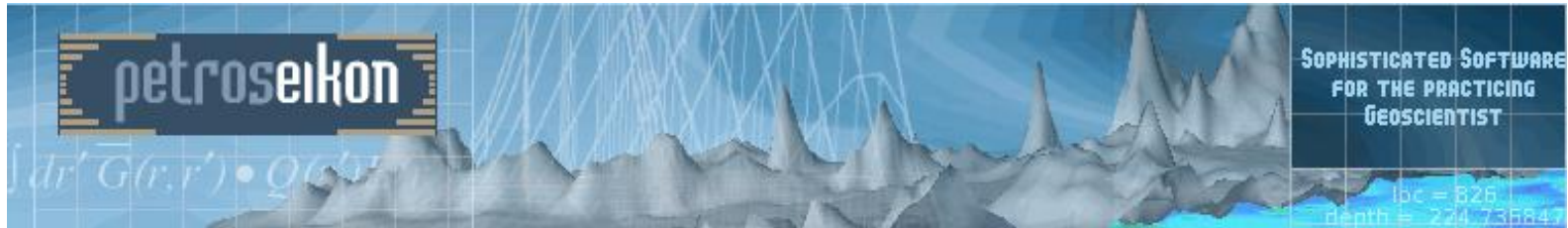
All prices are in US \$ - Valid until July 1, 2019

EMIGMA for TEM – Ground & Borehole	\$4,000
<i>Basic, 3D Modelling, 1D inversion including both inloop and out-of-loop configurations</i>	
EMIGMA for Airborne TEM	\$6,000
<i>Basic, with 3D Modelling, 1D inversion including offset Tx-Rx configurations. Includes airborne and ground applications for FEM and TEM</i>	
Airborne and Ground EM for Natural Fields Add-On	\$3,000
<i>For natural field applications such as MT/AMT, ZTEM and AFMAG and capacitive electric field measurements</i>	
<i>Available as add-on to EMIGMA Premium Complete or EMIGMA for Airborne FEM+TEM</i>	
<i>This add-on is included in the EM for Oil and Gas license</i>	
EMIGMA for FEM	\$3,000
<i>Basic, with Pseudo-Depth imaging, 1D inversion, 3D modeling. Includes airborne and ground applications for FEM</i>	

Academic Packages

Please contact us for academic prices

<p><i>All above prices are in USD unless stated otherwise, and do not include any taxes, bank transfer charges, delivery costs, custom duties.</i></p> <p><i>Training is available on request.</i></p> <p><i>Please request a quotation.</i></p>	<p>Represented by:</p>
--	-------------------------------



PetRos Eikon Incorporated

www.petroseikon.com

PRICE LIST

All prices are in US \$ - Valid until July 1, 2019.

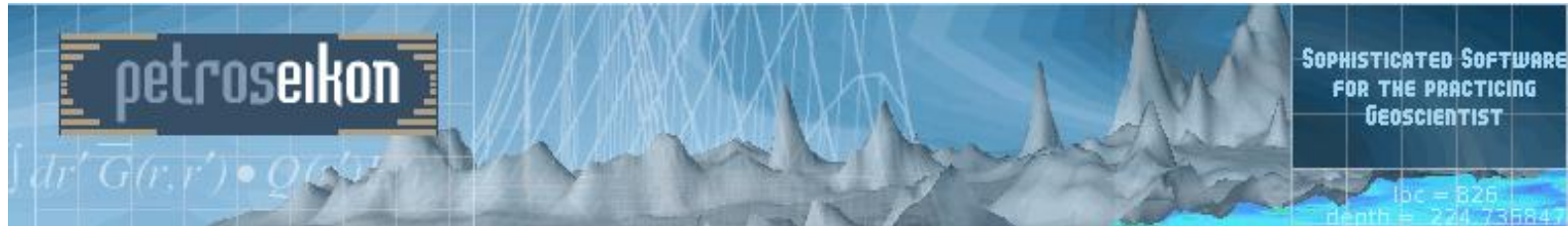
Professional Licenses for Ground Only Environmental and Geotechnical Packages

V9 Ground Applications- Professional Series – No borehole or airborne capabilities
database framework, unlimited surveys per database with a maximum of 50,000 data points per survey.

EMIGMA for Ground – VLF/VLF-R, V9 Professional	\$1,500
EMIGMA for Ground - Magnetics , V9 Professional	\$2,500
EMIGMA for Ground – Resistivity, IP , V9 Professional	\$2,500
EMIGMA for Ground – Potential Fields - Ground surveys only <i>Magnetics + Gravity package, V9 Professional</i>	\$4,000
EMIGMA for Ground – TEM – Ground surveys only	\$3,000
EMIGMA for Ground Complete <i>IP/Resistivity, FEM, TEM, Magnetics, Gravity V9 Professional</i>	\$5,000

<p><i>All above prices are in USD unless stated otherwise, and do not include any taxes, bank transfer charges, delivery costs, custom duties.</i></p> <p><i>Training is available on request.</i></p> <p><i>Please request a quotation.</i></p>	<p>Represented by:</p>
--	-------------------------------

Copyright PetRos Eikon Incorporated © 1994-2019. All rights reserved.



PetRos Eikon Incorporated

www.petroseikon.com

PRICE LIST

Valid until July 1, 2019.

QCTool V3.0.11

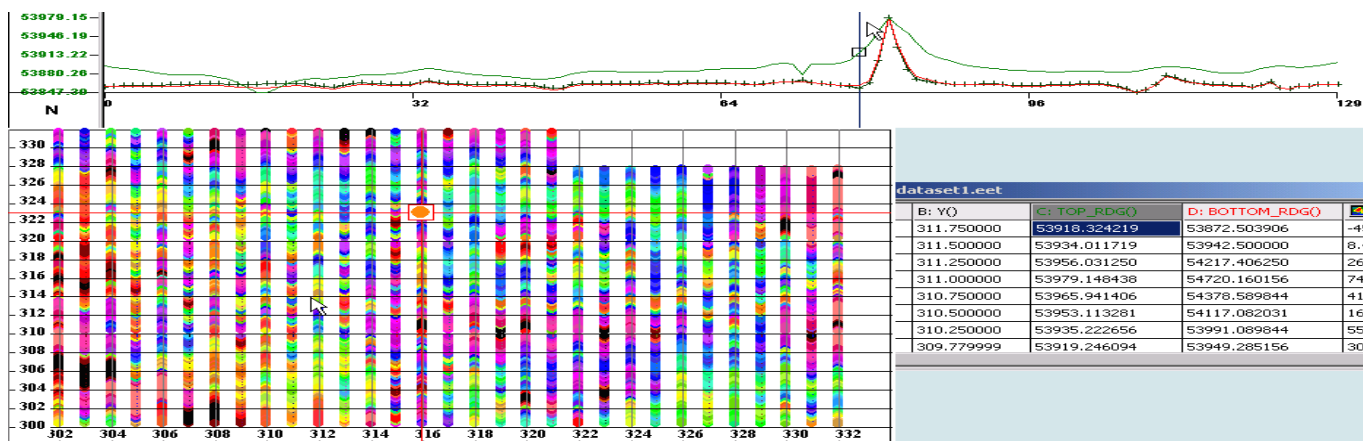
QCTool V3.0.11 Standard

Includes 1 year of email support and upgrades

Data Quality Control, unlimited data points, greater than 500 channels, data linked spreadsheet, plotter, gridding, contouring, filters, GPS projections, gravity corrections, magnetic corrections including IGRF, derivative calculations

Aeromagnetic Compensation add-on available

Basic Price - \$300 USD/license for more details refer to www.qc-tool.com



All above prices are in USD unless stated otherwise, and do not include any taxes, bank transfer charges, delivery costs, custom duties.

Training is available on request.

Please request a quotation.

Represented by: